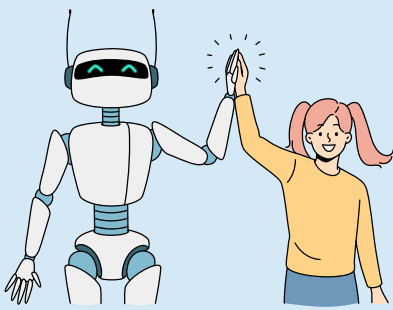


WHAT IS AI?

An AI overview for educators

PARTIALLY GENERATED WITH THE USE OF PERPLEXITY (LIKE CHAT GPT) AND FACT CHECKING



WHAT IS AI?

Artificial intelligence (AI) is a wide-ranging branch of computer science concerned with building smart machines capable of performing tasks that typically require human intelligence.

HOW DOES IT WORK?

AI works by combining large amounts of data with fast, iterative processing and intelligent algorithms, allowing the software to learn automatically from patterns or features in the data.

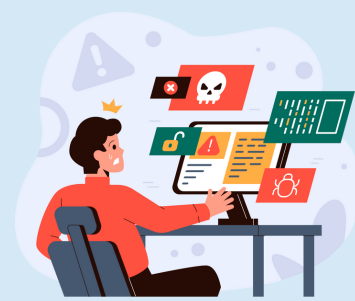


AI FUN FACT!

You are probably already using AI powered tools in your classroom or school, so don't let all the buzz scare you off! Here are a few examples: Edpuzzle, Duolingo and Nearpod.

HOW IS AI TRAINED?

AI is trained by feeding data into a computer algorithm to create a model. There is also a human component, called supervised fine tuning, where people input correct responses, which then allows the model to use that as part of its "learning".



WHERE DO THESE NEW AI TOOLS GET THEIR DATA?

The data to train AI comes from various sources such as public datasets for machine learning and data science. Some sources of these datasets include Google, Kaggle, Amazon and UCI Machine Learning Repository, among others.



SO WHAT IS CHATGPT?

ChatGPT is an AI system that is trained to interact in a conversational way. The user types a prompt in a chat field, and ChatGPT responds. The dialogue format makes it possible for ChatGPT to answer follow-up questions.



WHAT ARE OTHER TYPES OF TOOLS EDUCATORS SHOULD EXPLORE?

- text generators: Perplexity and ChatGPT
- video generators: Pictory
- voice generators: Murf.ai
- image generators: DALL-E),
- slide presentation generators: TOME



WHERE SHOULD EDUCATORS BEGIN?

Before using anything with students, begin with establishing guidelines and expectations. Go to our LINC "[Guidelines for Using AI Responsibility](#)" to get started.

If you are curious, here is the [link](#) to the Perplexity chat that provided much of the information in this graphic

www.linclearning.com